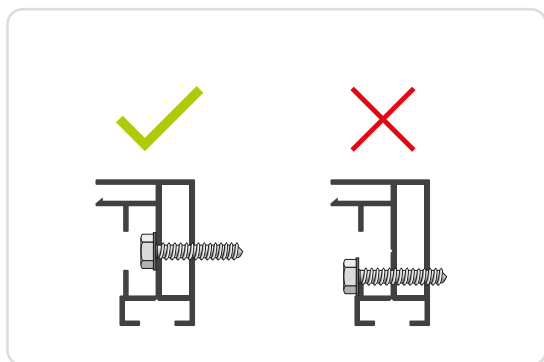


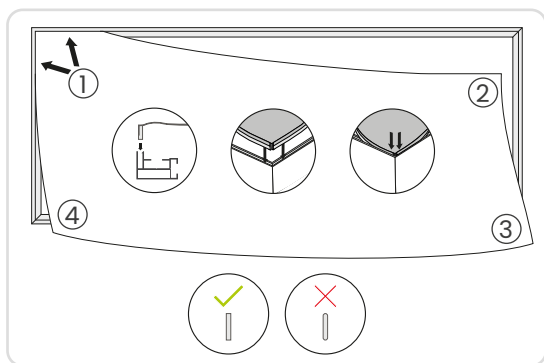
Installation manual Outdoor 27

Determine the right location for the outdoor textile frame, and take into account the type of surface. It is important that the frame is mounted on a flat surface and that a stretchable and water-repellent fabric is used.



1. Drilling holes in the profile

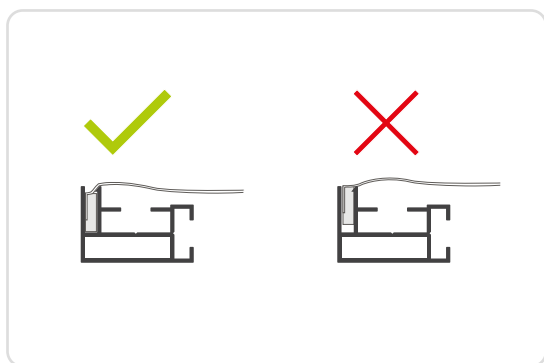
The Outdoor 27 profile is delivered without pre-drilled holes. Attach the frame securely to the wall using appropriate fixings for the type of wall you are mounting to. Drill the holes in the right place.



2. Mounting the frame and inserting the fabric

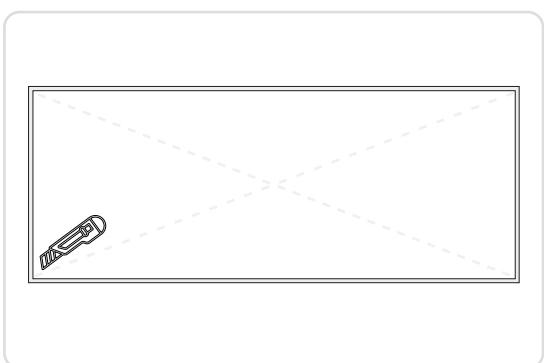
Mount the frame level onto the wall. Slide the 14x3 mm flat silicone strip into the frame channel, starting with the top and bottom corners. Then proceed with the full top, sides, and finally the bottom.

Please note: always use a silicone strip with square corners. Rounded corners are not suitable.



3. Securing the silicone strip behind the integrated barb

Firmly press the silicone strip behind the integrated barb to ensure storm-proof fastening.



4. Replacing the print

Cut the fabric diagonally to release the tension and pull the silicone strip out from behind the integrated barb. The new fabric with silicone strip can then be mounted in the frame.