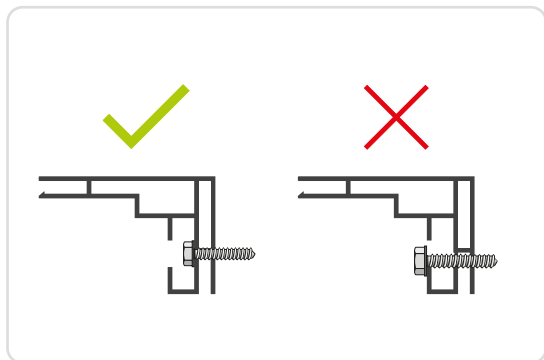


Installation manual Outdoor Lightbox 60

It is essential that the LED frame is mounted on a flat surface and that a stretchable, water-repellent backlit fabric is used. Check the power supply location and where it enters the LED frame. Ensure the cable is long enough to reach the connection box.

1. Drilling holes in the profile

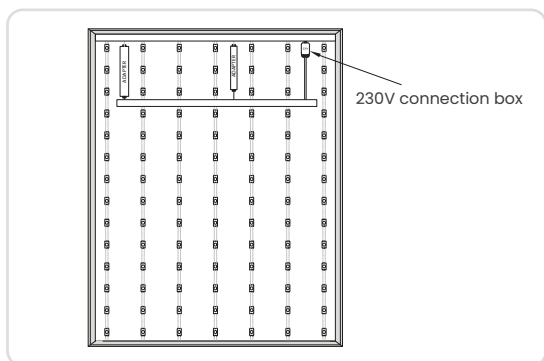
The Outdoor Lightbox 60 profile is delivered without pre-drilled holes. Attach the frame securely to the wall using appropriate fixings for the type of wall you are mounting to. Drill the holes in the right place.



2. Mounting the frame and connecting the cable

Mount the frame level onto the wall. Connect the 230V mains power to the connection box inside the LED frame. Before attaching the fabric, check that all LEDs are functioning properly.

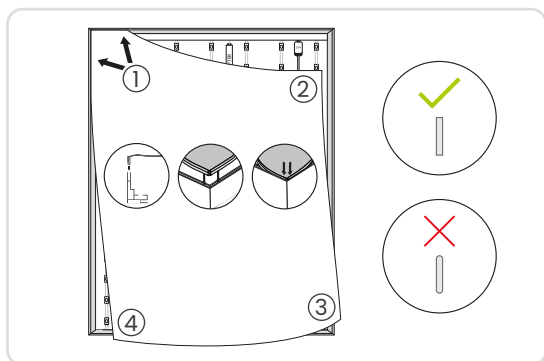
For proper drainage, the bottom profile of the frame includes drainage holes (Ø7 mm).



3. Inserting the fabric

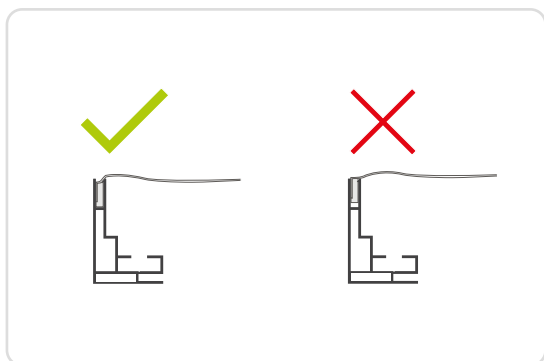
Slide the 14x3 mm flat silicone strip into the frame channel, starting with the top and bottom corners. Then proceed with the full top, sides, and finally the bottom.

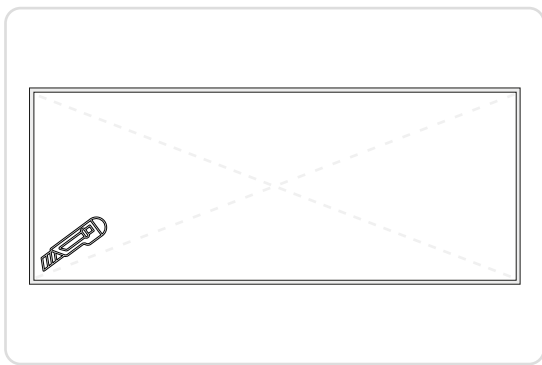
Please note: always use a silicone strip with square corners. Rounded corners are not suitable.



4. Securing the silicone strip behind the integrated barb

Firmly press the silicone strip behind the integrated barb to ensure storm-proof fastening.





5. Replacing the print

Cut the fabric diagonally to release the tension and pull the silicone strip out from behind the integrated barb. The new fabric with silicone strip can then be mounted in the frame.